

Manual Config tool PreAmplifier

Contents

Preface	1
Getting started	2
Update:.....	4
Start update.....	4
Update progress	4
Update completion	5
Failed updates	6
Forcing bootloader mode	7
Figurelist	8
Revisions	8

Preface

The DIY-PreAmplifier is equipped with an OLED display which can display various settings. Most of these settings are done using the menu which is activated by pressing the left front knob. With this knob it is possible to iterate through all settings.

To update the firmware of all modules within the PREAMP, a configuration tool is developed. With this tool it is also possible to change some settings that are not accessible through the menu (see Figure 3) and you can view a compact log and check the serial number.

Getting started

1. Install the config tool on PC. The PREAMP config tool can be downloaded from here: www.hypexdirect.com. It is a Windows only application depending on .NET framework 4.8 or higher.
2. Connect USB mini cable between computer and the USB service port on the back of the PREAMP.
3. Start the Config Tool.
4. Start up the PREAMP (push volume button) and it will connect to the config tool. If an update is available, a pop-up message will appear to notify that a new update bundle is available. This update is downloaded automatically:

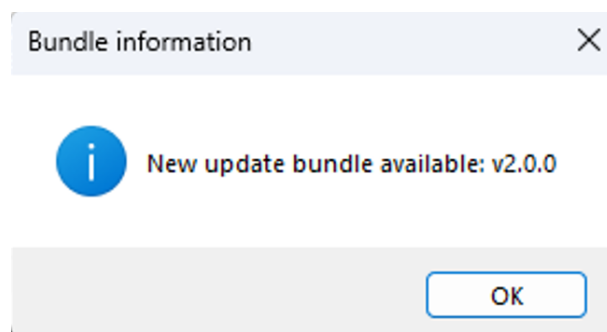


Figure 1: Update bundle available

Depending on the version of the firmware of the connected PREAMP, one of the following two screens will be visible:

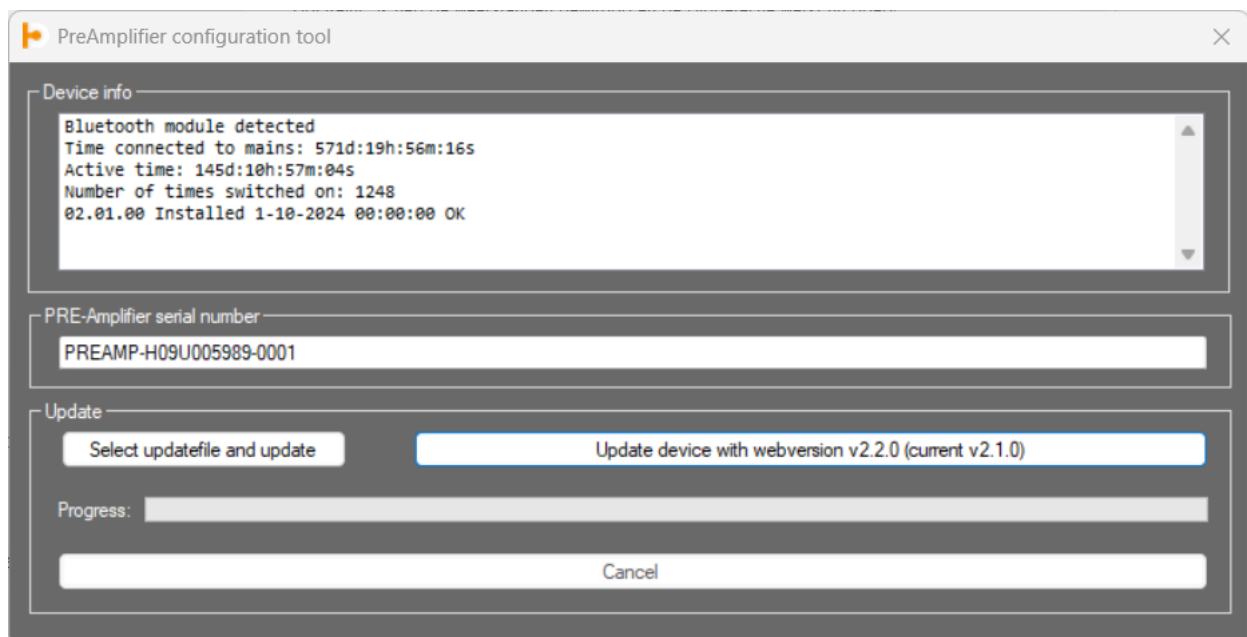


Figure 2: Configtool main page (before v2.2.0 firmware)

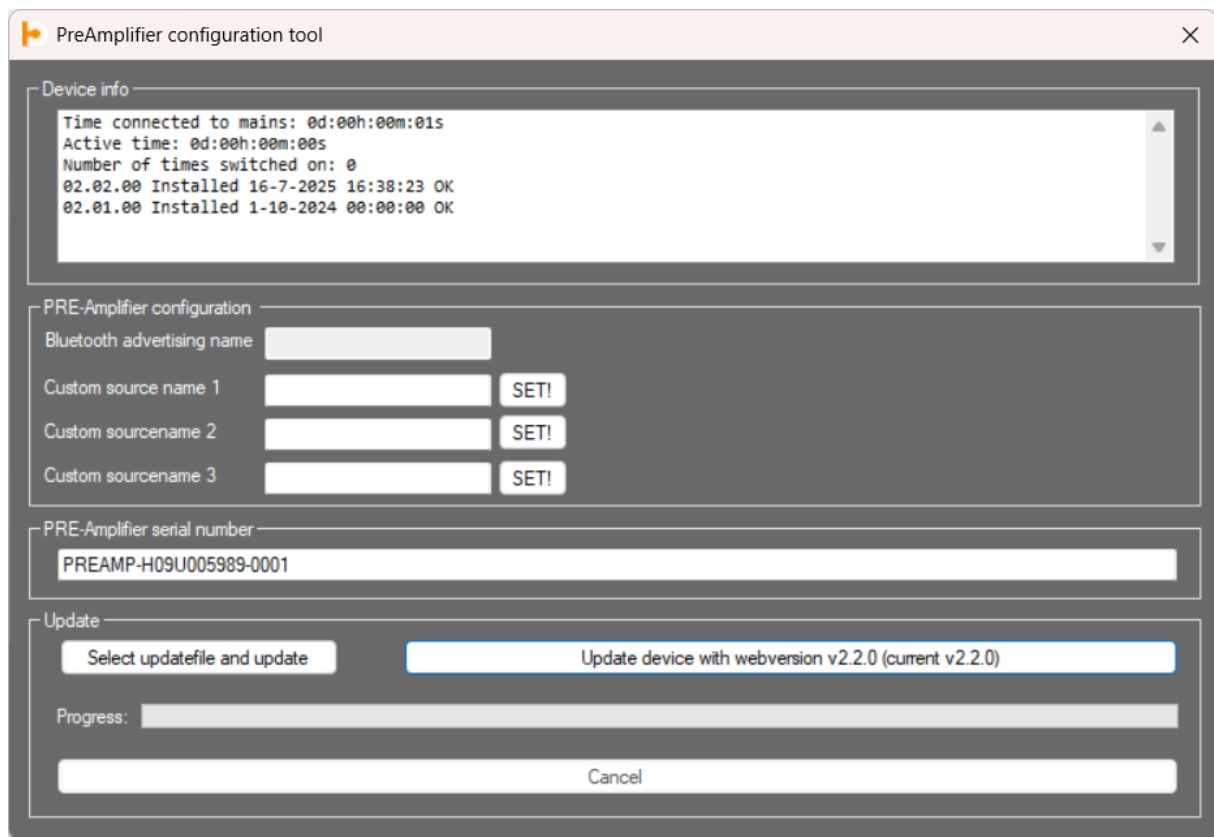


Figure 3: Config tool main page (v2.2.0 and higher firmware)

5. To update your device you need to click on the button **Update device with webversion vx.x.x (current vx.x.x)**. Then, the update will start and will process only modules that need to be updated.
6. As of firmware version 2.2.0 a few more parameters are visible. These are:
 - a. Bluetooth advertising name
 - b. Custom source name 1
 - c. Custom source name 2
 - d. Custom source name 3

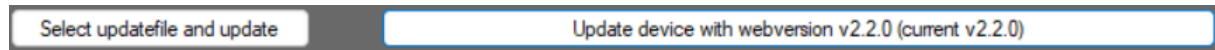
Only b), c) and d) can be changed, a) is read-only. The custom source names can be assigned to an input (this is done on the PRE-AMP itself) and will be displayed on the OLED display when that input is selected.

The Bluetooth advertising name is only visible for your convenience.

Update:

Start update

When an update is available, or it is needed to update the device, two buttons are available:



Normally the right button is used. If you click on it, the most recent firmware will be downloaded from the Hypex website and programmed into the device. After clicking the left button, you will have to select an update file bundle, usually received by our support service, or in case of a downgrade, found on a location on your harddrive, which should be here:

"C:\Users\[your Windows user name]\AppData\Roaming\DIYPREAMP". In subfolder "BAK" you will find the previous update in a file named "DiyPreAmp.zip",

Do not power down or remove the power cable during update. Do not remove the USB mini cable during update.

The update order is:

- Main
- Front
- Digin (if placed in device)

Update progress

The Config tool will show which update is in progress (see figure below).

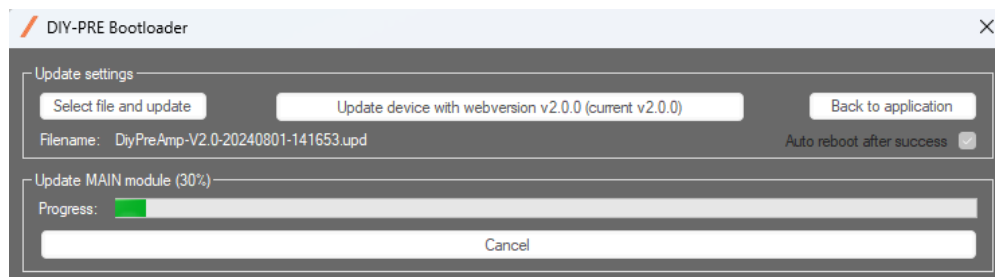


Figure 4: Update of main module in progress

The display on the device will also show which part of the update is in process.



For example:

After the main module, the Front module will be updated if needed. The screen will change into the standard configuration screen:

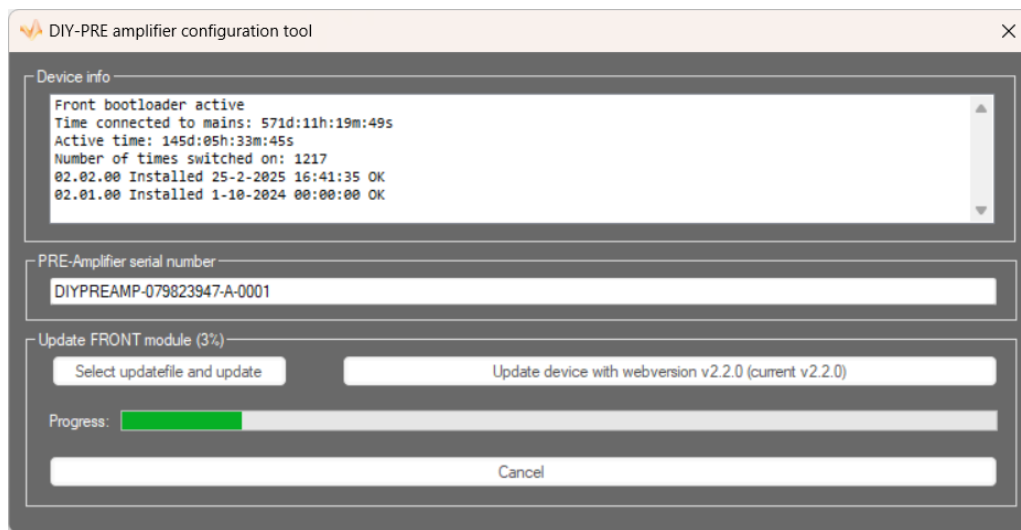


Figure 5: Front update in progress

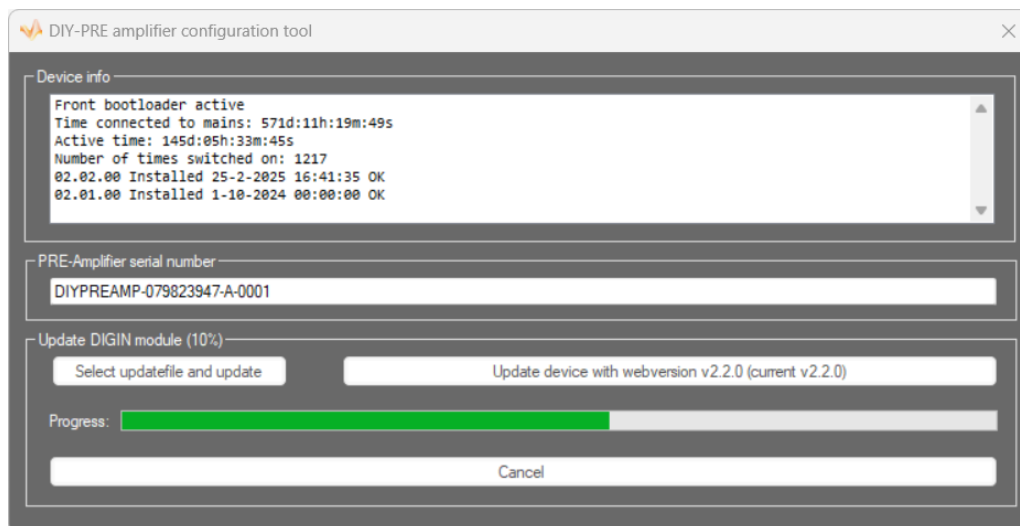


Figure 6: Digin update in progress

Update completion

After the update is completed, a pop-up message will appear, that could look like this:

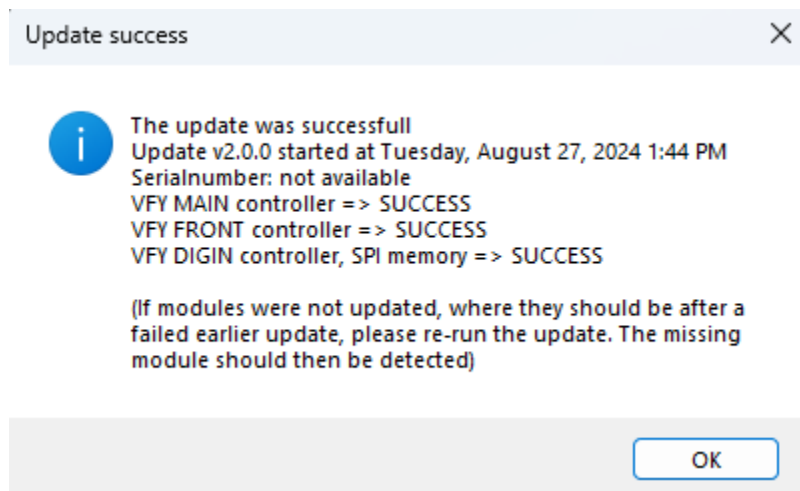


Figure 7: Update successful

Please follow the instructions to reboot the device (power cycle):

- switch the device off with the power switch on the back
- wait 15 seconds
- switch device on
- wait 5 seconds
- press volume button to power on device

Failed updates

If the update has failed, then a pop-up message will appear that will notify you which part failed. Please follow the instructions to update the device again.

- a) If the update has failed during the update of the main module, then the device will recognize that the device is in an interrupted update state. Click on update to start update procedure. After successful updating the Main module, the update procedure can be started again to update the rest of the device (which will most probably update the main module if it is in the update bundle).

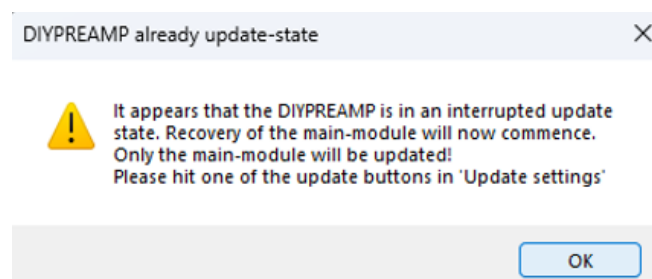


Figure 8: Device in an interrupted update state

- b) If the update failed during the update of another module, then the update needs to be started again. It is possible that the config tool does not detect that the update has failed.

Click on **Update device with webversion vx.x.x (current vx.x.x)** button. If a pop-up message appears that the update is not necessary, then click Yes.

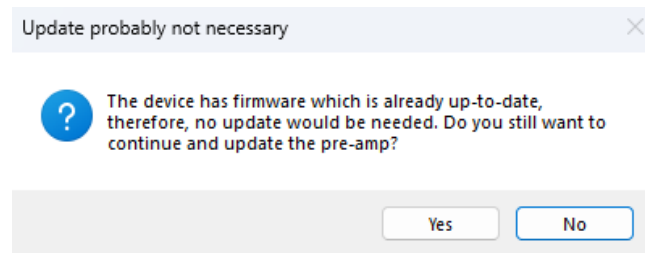
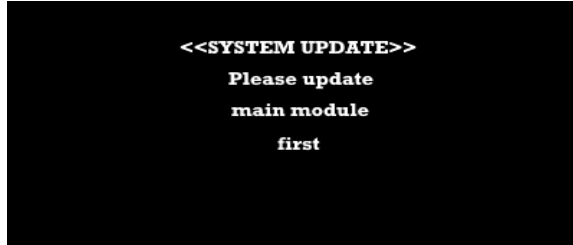


Figure 9: Update probably not necessary

Forcing bootloader mode

It is possible to force the internal modules to run their bootloaders in the unlikely event that the microcontrollers will not go into bootloader mode during the normal update process.

1. Make sure that the power switch at the back is switched to off and wait at least 30 seconds
2. Next, press the volume knob (right knob) and the headphones enable button at the same time
3. And switch the power switch at the back to on
4. Release the headphone enable button and the volume knob
5. The display should indicate that the bootloaders are started:



The update can then be started by starting the Config Tool and then click on the button **Update device with webversion vx.x.x (current vx.x.x)**. That will start updating the main module first and if needed the rest of the modules.

Figurelist

Figure 1: Update bundle available	2
Figure 2: Configtool main page (before v2.2.0 firmware)	2
Figure 3: Config tool main page (v2.2.0 and higher firmware)	3
Figure 4: Update of main module in progress	4
Figure 5: Front update in progress	5
Figure 6: Digin update in progress.....	5
Figure 7: Update successful.....	6
Figure 8: Device in an interrupted update state	6
Figure 9: Update probably not necessary	7

Revisions

Document revision	Change log	Date
R1	First release	November '24
R2	Layout and content updated	March '25
R3	Rebranding Hypex Direct + added new features	July '25
R4	Website HypexDirect	August '25
R5	Textual modifications	January '26